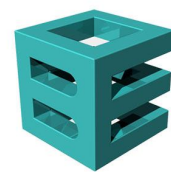


INFINITY SLIDING SHUTTERS Gaash



Project : Gaash
Location : Gaash Israel
Product : InFINITY Sliding and Folding Shutters
Special : Sublimated aluminium
Architect : Ilan Pivko Architects

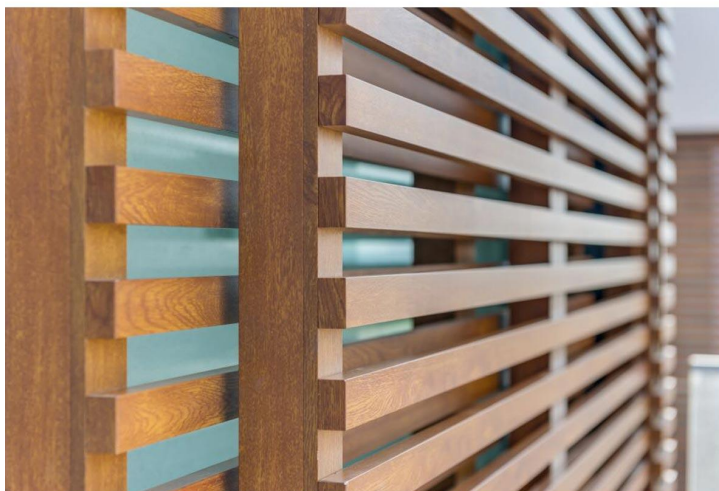


Building Elegance

www.buildingelegance.com
Info@buildingelegance.com

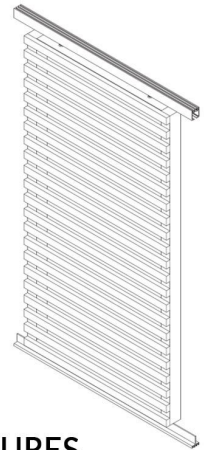
PRODUCT INFORMATION:

InFINITY Sliding Shutters



SYSTEM OVERVIEW

InFINITY Shutters are a valuable addition to the Building Elegance range of louvre shutters. Placing the fins in front of the shutters creates a different appearance of endless lines, uninterrupted by vertical frames. The crisp design can be given further expression by choosing one of our special design finishes.



INFINITY SHUTTERS - KEY FEATURES

- Rectangular profiles running over full width of shutter, hiding frame from outside view
- Clean and crisp design without any visible fixations
- All profiles in aluminium for maintenance free durability and stability
- Excellent wood-look finishes for warm and natural appearance without weathering.

STANDARD WOOD LOOK FINISHES



Pine Premium /
BES 2120 P



Dark Pine /
BES 2101 P



Oak Premium /
BES 2321 P



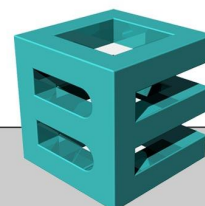
Dark Oak Premium /
BES 2317 P



Stripes Oak Premium /
BES 2319 P



Walnut Premium /
BES 2916 P



Building Elegance



Scan me

© Registered trademark - a Building Elegance® product Pats. & Pats. Pend. - Technical data subject to change without notice. © Copyright Building Elegance. No rights can be derived from copy, text pertaining to illustrations or samples. Subject to changes in materials, parts, compositions, designs, versions, colours etc., even without notice.