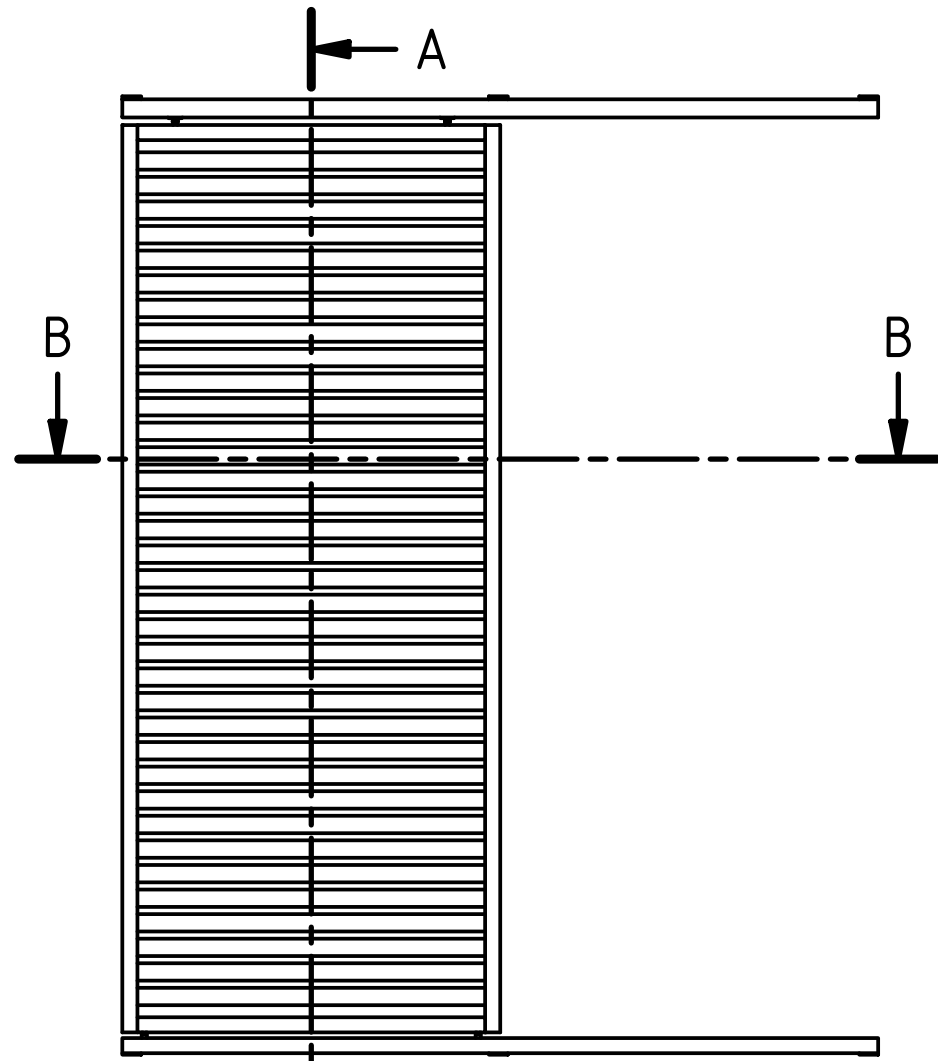
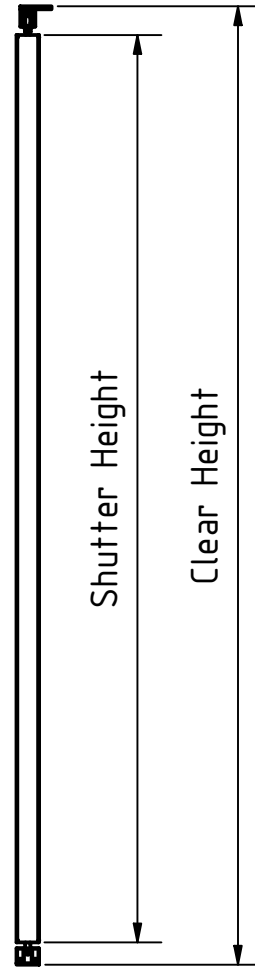


A-A (1 : 20)



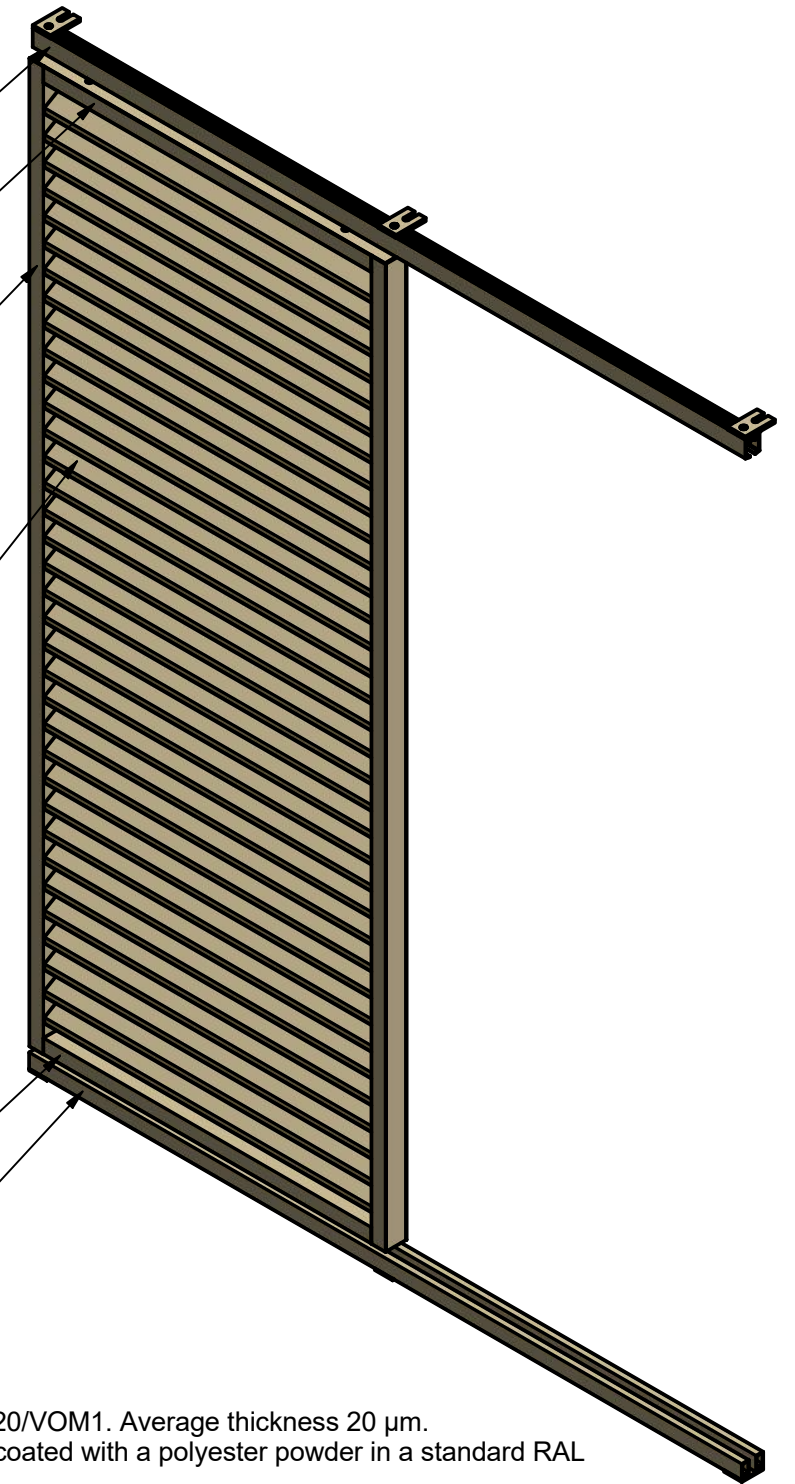
M



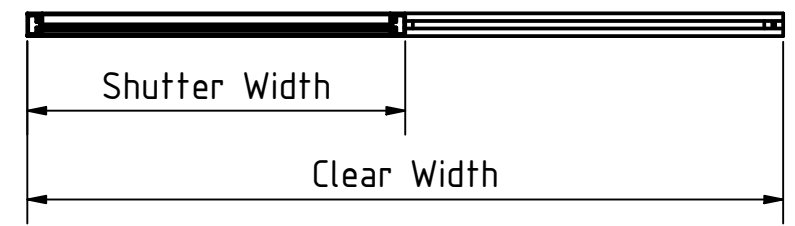
Alu Top Rail
Alu Horizontal Frame
Alu Vertical Frame
Heavy Duty

Infill
Alu Fin R 68x16

Alu Horizontal Frame
Alu Bottom Rail



B-B (1 : 20)



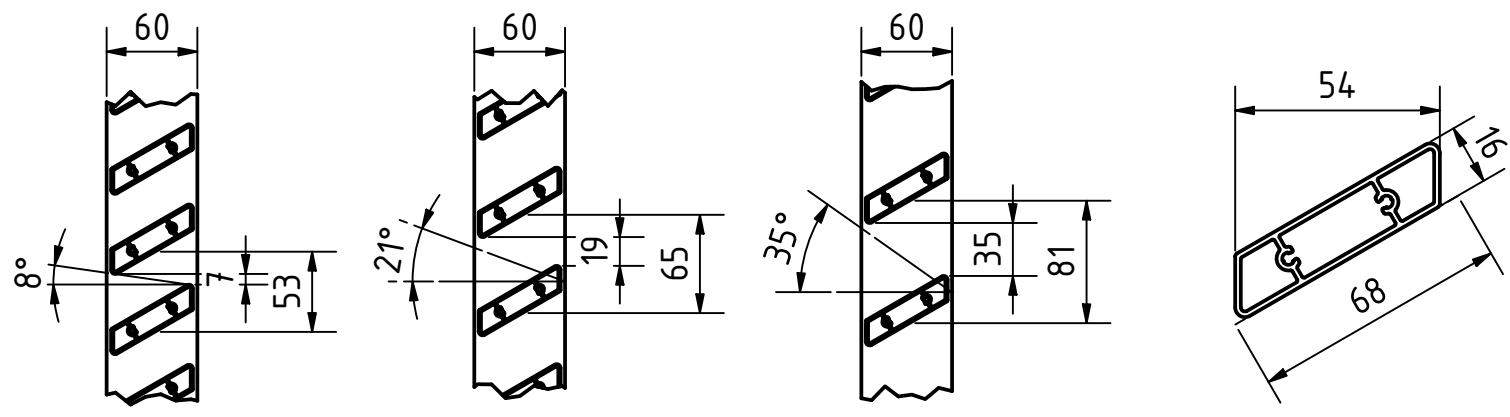
Manual Sliding Shutter
Heavy Duty Alu R Fin 68x16

Surface treatment

- All aluminium profiles natural anodized VB6/A20/VOM1. Average thickness 20 µm.
- All visible aluminium parts and profiles will be coated with a polyester powder in a standard RAL colour. Thickness avg. 60 µm; gloss 70%.
- All visible aluminium parts and profiles will be sublimated with a standard film, top, bottom rail and rail brackets will be coated with a polyester powder in a standard RAL colour. Thickness avg. 60 µm; gloss 70%.

M (1 : 5) Standard center to center

Fin Type



		Date	Name	SS 60x40 Alu Fin R 68x16
		Drawn	2-4-2020	
		Checked		31 1601 0027 Assembly
		Standard		
State	Changes	Date	Name	A3